

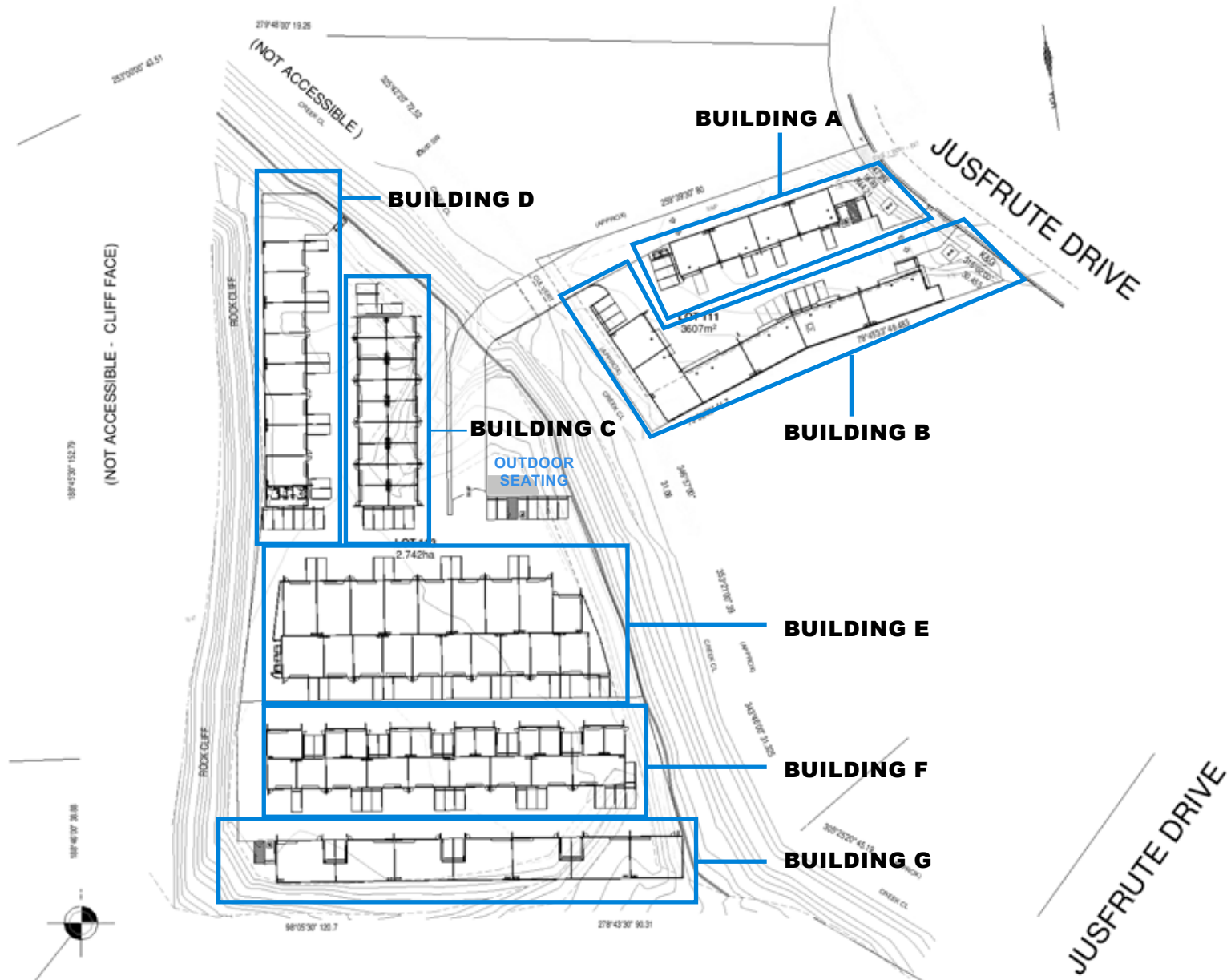


FORTIS

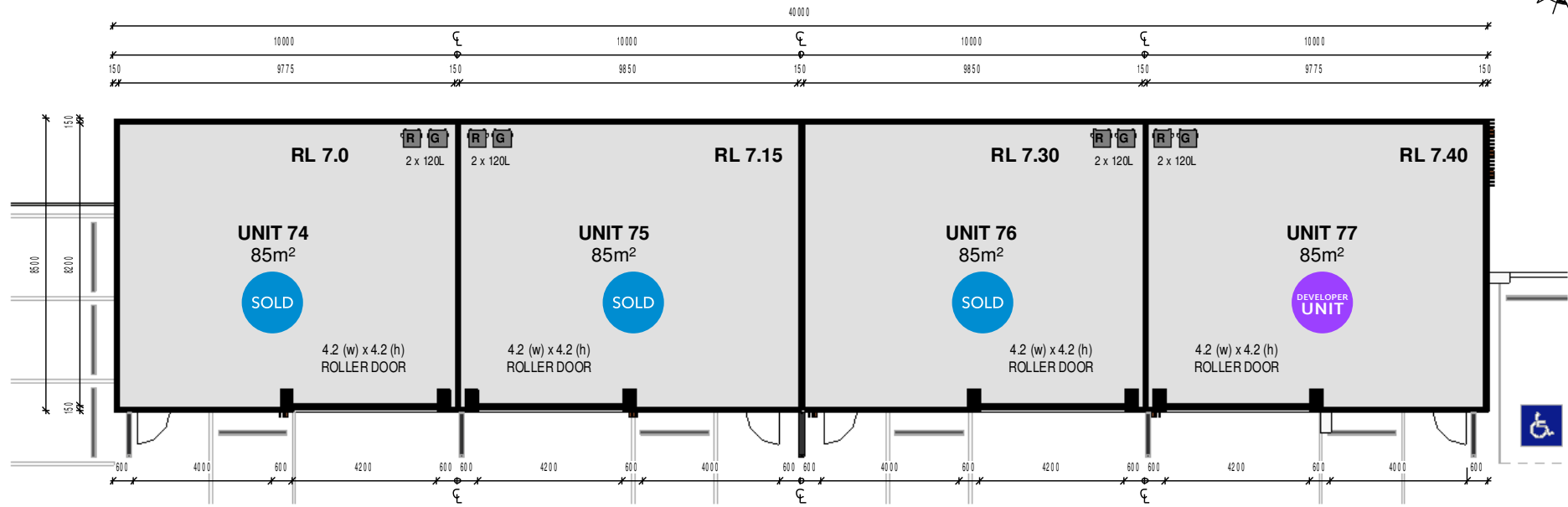
STAGE 1
Building A to G

DiJONES | Commercial

Site Plan



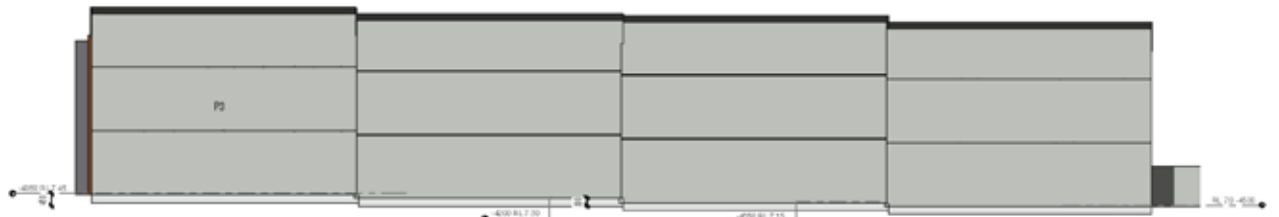
Building A Floorplan



Building A Elevation



1 B6 - East Elevation
1:100



2 B6 - North Elevation
1:100



3 B6 - South Elevation
1:100



4 B6 - West Elevation
1:100



COLOURS

P3

CB3

CB2

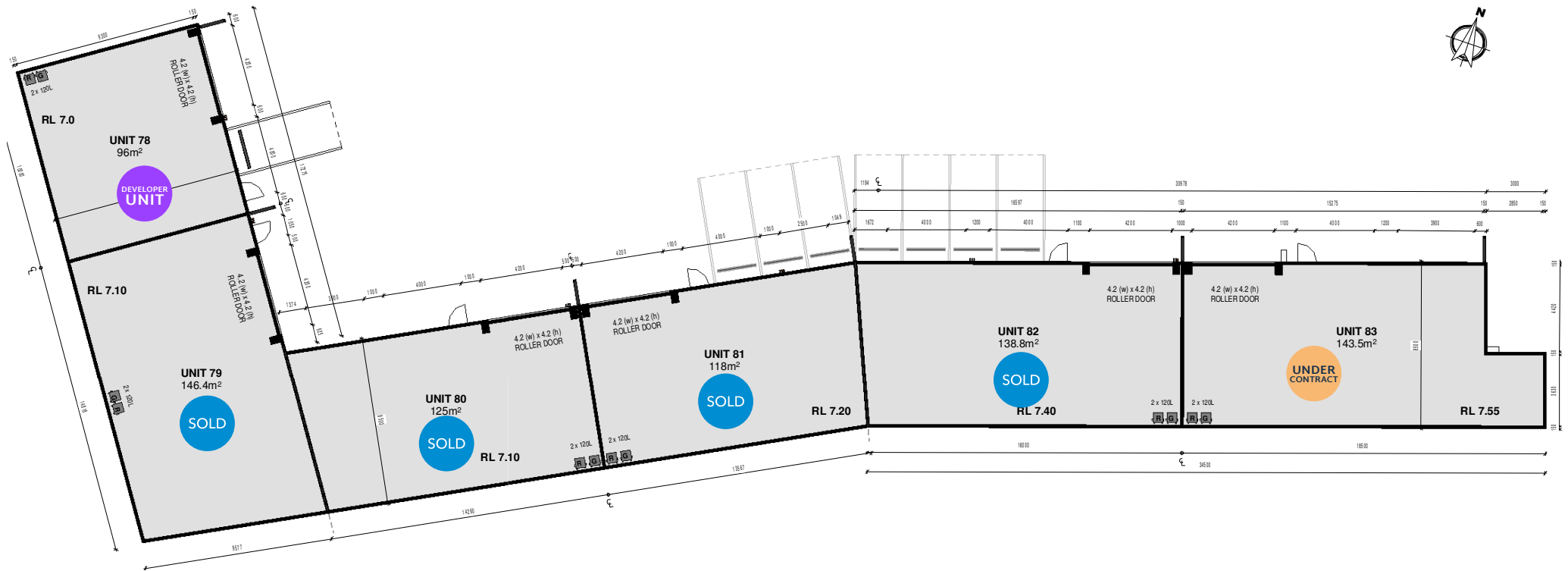
CB3

Building A Pricing

Building A	Parking	m ²	PA Door	Roller Door	Price	Est. Rental PA++	Est OG
Unit 74	1	85	Yes	4.2w X 4.2h	\$354,000 + GST	\$20,400	\$3,825
Unit 75	1	85	Yes	4.2w X 4.2h	\$348,000 + GST	\$20,400	\$3,825
Unit 76	1	85	Yes	4.2w X 4.2h	\$348,000 + GST	\$20,400	\$3,825
Unit 77	2	85	Yes	4.2w X 4.2h	\$364,000 + GST	\$20,400	\$3,825

*all sqm sizes are approximate

Building B Floorplan



Building B Elevation



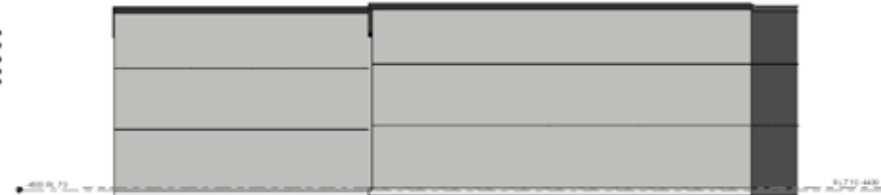
1 B7 - North Elevation
1:100



2 B7 - South Elevation
1:100



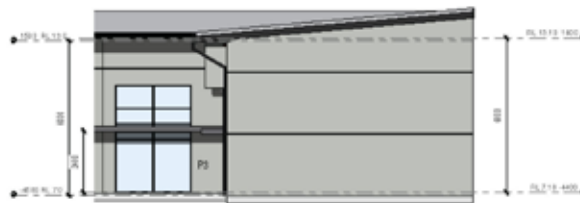
3 B7 - East Elevation 1
1:100



4 B7 - West Elevation
1:100



5 B7 - East Elevation 2
1:100



6 B7 - North West Elevation
1:100

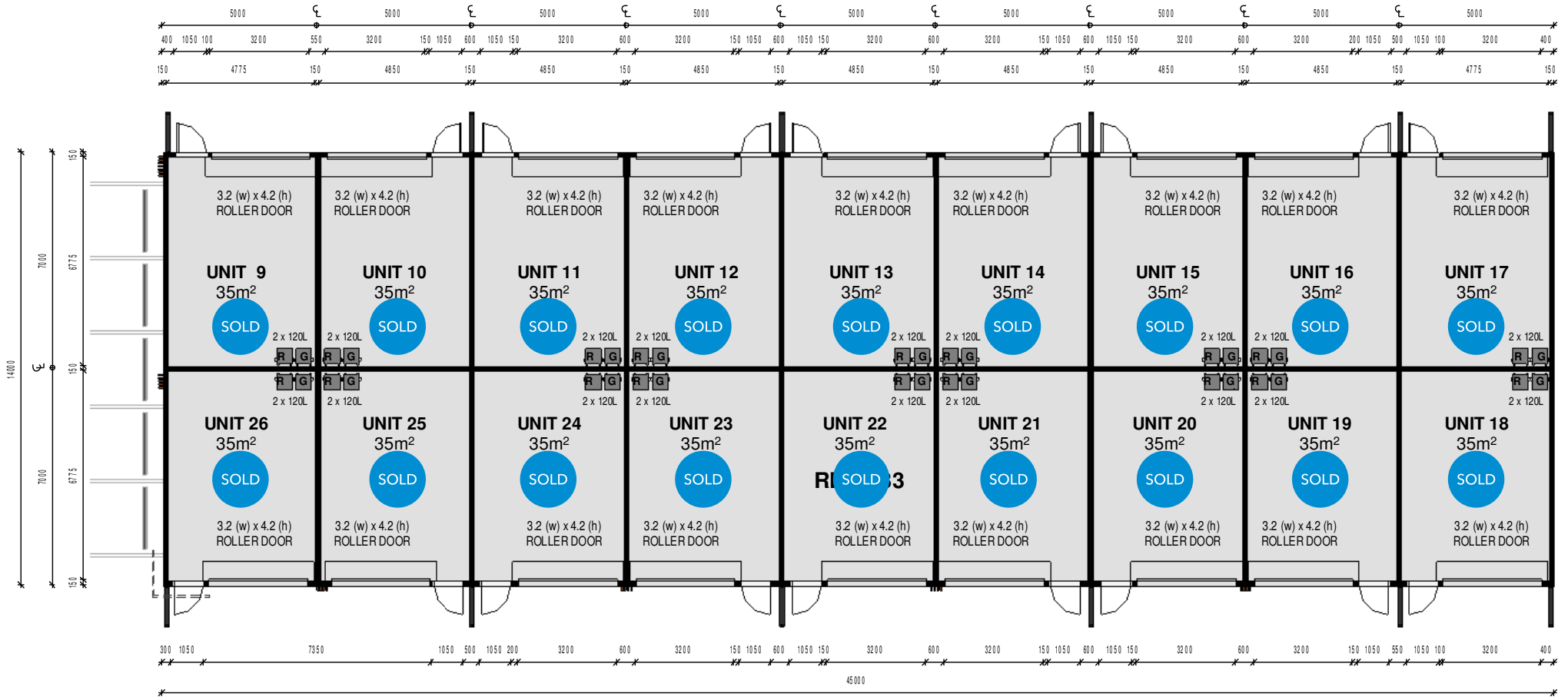
COLOURS	P3	CB3	CB2	CB3
	Colobond Shale Grey	Colobond Beard	Colobond Monument	Colobond Shale Grey

Building B Pricing

Building B	Parking	m ²	PA Door	Roller Door	Price	Est. Rental PA++	Est OG
Unit 78	2	96	Yes	4.2w X 4.2h	\$ 412,000 + GST DEVELOPER UNIT	\$ 23,000	\$ 4,320
Unit 79	1	146.4	Yes	4.2w X 4.2h	\$ 651,000 + GST SOLD	\$ 35,000	\$ 6,588
Unit 80	1	125	Yes	4.2w X 4.2h	\$ 551,000 + GST SOLD	\$ 30,000	\$ 5,625
Unit 81	3	118	Yes	4.2w X 4.2h	\$ 482,000 + GST SOLD	\$ 28,300	\$ 5,310
Unit 82	2	138.8	Yes	4.2w X 4.2h	\$ 557,000 + GST SOLD	\$ 33,300	\$ 6,246
Unit 83	1	143.5	Yes	4.2w X 4.2h	\$ 614,000 + GST UNDER CONTRACT	\$ 34,400	\$ 6,458

*all sqm sizes are approximate

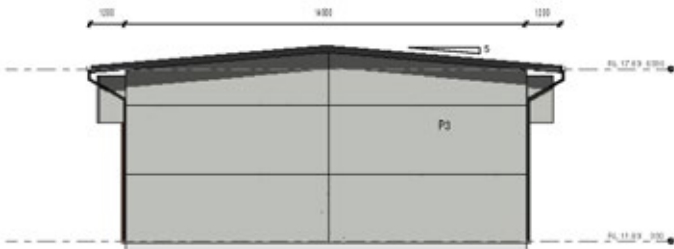
Building C Floorplan



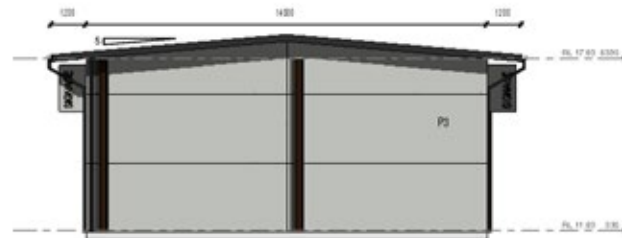
Building C Elevation



1 B2 - East Elevation
1:100



2 B2 - North Elevation
1:100





3 B2 - South Elevation
1:100



4 B2 - West Elevation
1:100

COLOURS

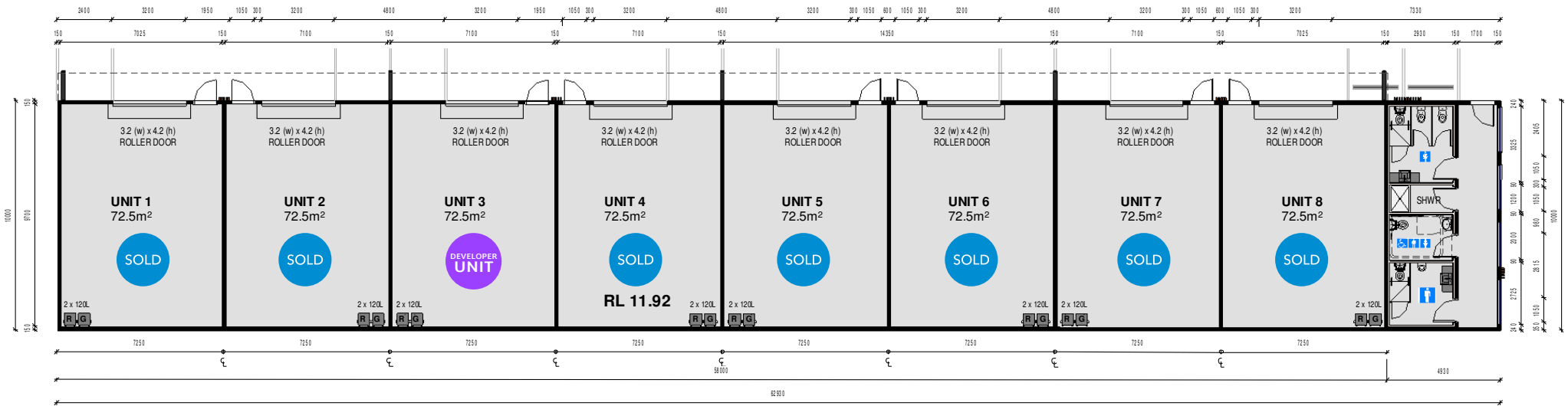
			
P3	CB3	CB2	CB3

Building C Pricing

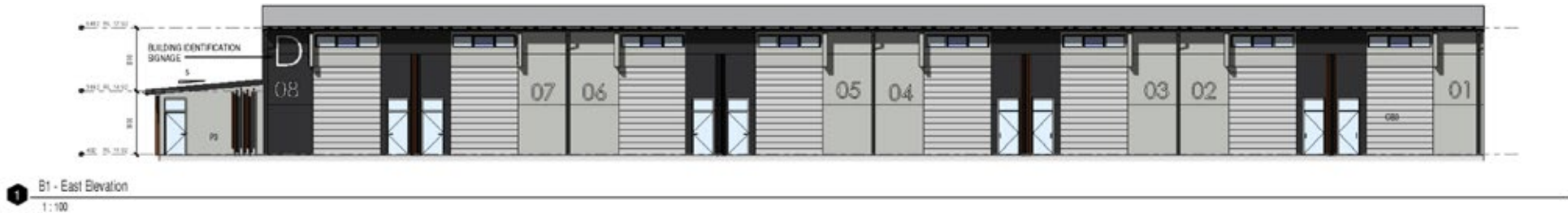
Building C	Parking	m ²	PA Door	Roller Door	Price	Est. Rental PA++	Est OG
Unit 9	1	35	Yes	3.2w x 4.2h	\$ 15,000 + GST	\$ 8,550	\$1,575
Unit 10	1	35	Yes	3.2w x 4.2h	\$ 15,000 + GST	\$ 8,400	\$1,575
Unit 11	1	35	Yes	3.2w x 4.2h	\$ 15,000 + GST	\$ 8,400	\$1,575
Unit 12	1	35	Yes	3.2w x 4.2h	\$ 15,000 + GST	\$ 8,400	\$1,575
Unit 13	1	35	Yes	3.2w x 4.2h	\$ 15,000 + GST	\$ 8,400	\$1,575
Unit 14	1	35	Yes	3.2w x 4.2h	\$ 15,000 + GST	\$ 8,400	\$1,575
Unit 15	1	35	Yes	3.2w x 4.2h	\$ 15,000 + GST	\$ 8,400	\$1,575
Unit 16	1	35	Yes	3.2w x 4.2h	\$ 15,000 + GST	\$ 8,400	\$1,575
Unit 17	1	35	Yes	3.2w x 4.2h	\$ 15,000 + GST	\$ 8,550	\$1,575
Unit 18	1	35	Yes	3.2w x 4.2h	\$ 15,000 + GST	\$ 8,550	\$1,575
Unit 19	1	35	Yes	3.2w x 4.2h	\$ 15,000 + GST	\$ 8,400	\$1,575
Unit 20	1	35	Yes	3.2w x 4.2h	\$ 15,000 + GST	\$ 8,400	\$1,575
Unit 21	1	35	Yes	3.2w x 4.2h	\$ 15,000 + GST	\$ 8,400	\$1,575
Unit 22	1	35	Yes	3.2w x 4.2h	\$ 15,000 + GST	\$ 8,400	\$1,575
Unit 23	1	35	Yes	3.2w x 4.2h	\$ 15,000 + GST	\$ 8,400	\$1,575
Unit 24	1	35	Yes	3.2w x 4.2h	\$ 15,000 + GST	\$ 8,400	\$1,575
Unit 25	1	35	Yes	3.2w x 4.2h	\$ 15,000 + GST	\$ 8,550	\$1,575
Unit 26	1	35	Yes	3.2w x 4.2h	\$ 15,000 + GST	\$ 8,550	\$1,575

*all sqm sizes are approximate

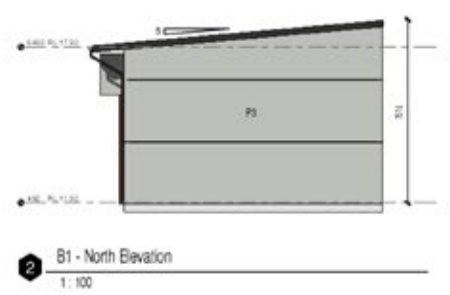
Building D Floorplan



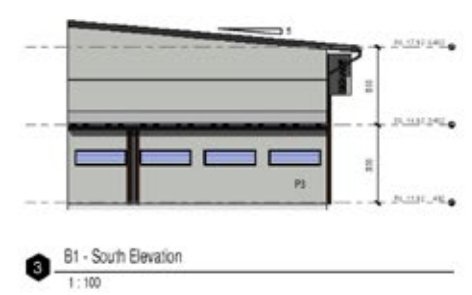
Building D Elevation



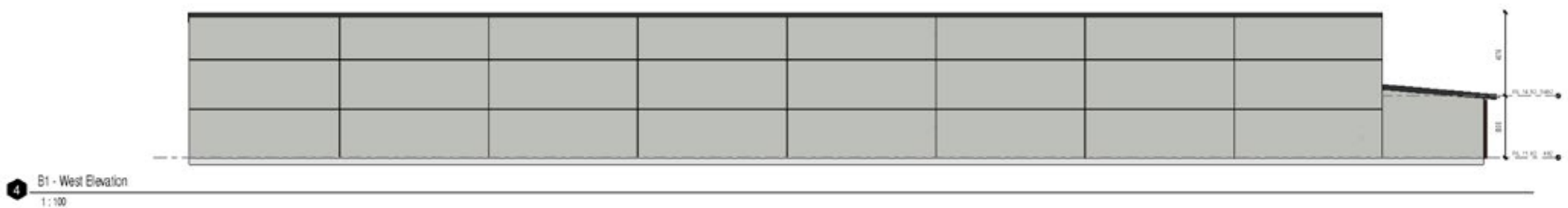
1 B1 - East Elevation
1:100



2 B1 - North Elevation
1:100



3 B1 - South Elevation
1:100



4 B1 - West Elevation
1:100

COLOURS

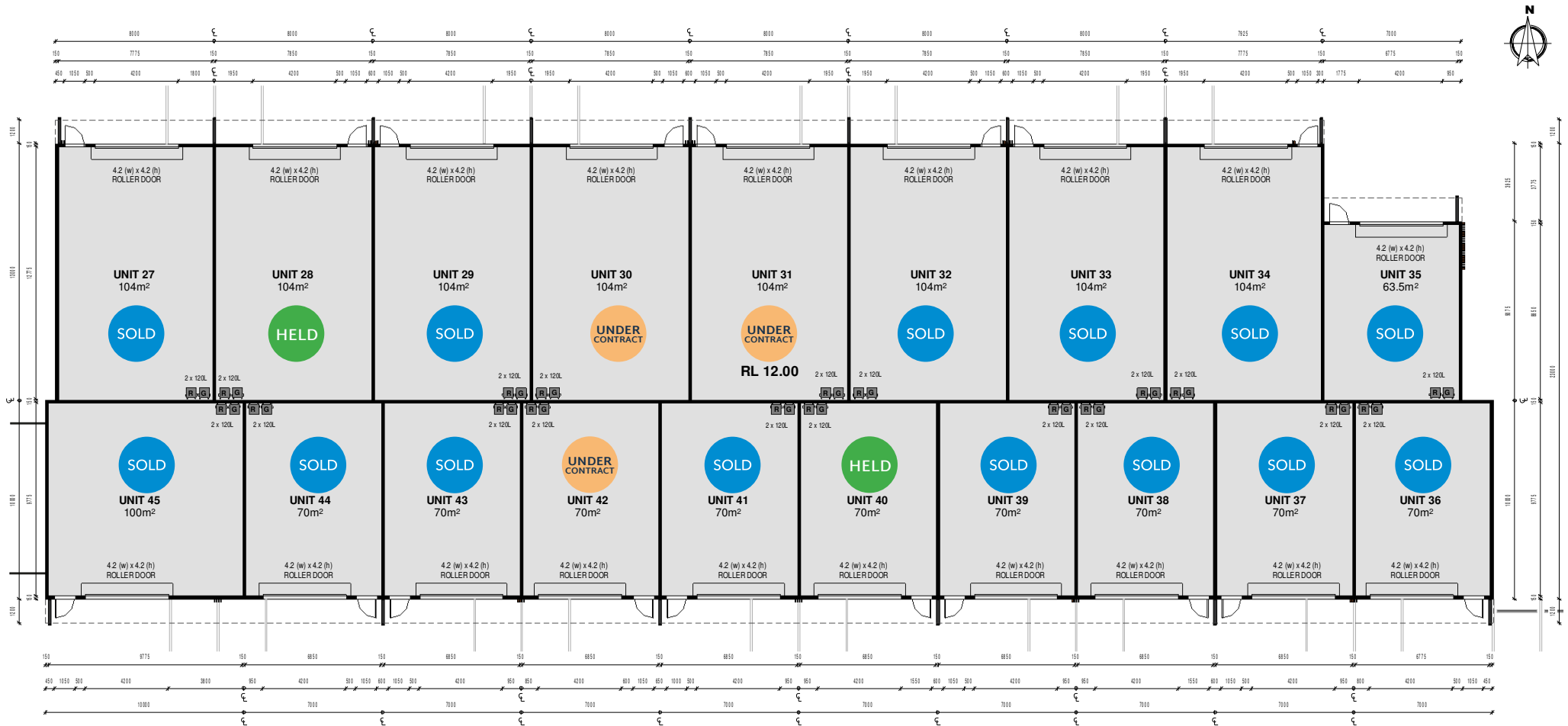
P3	CB3	CB2	CB3

Building D Pricing

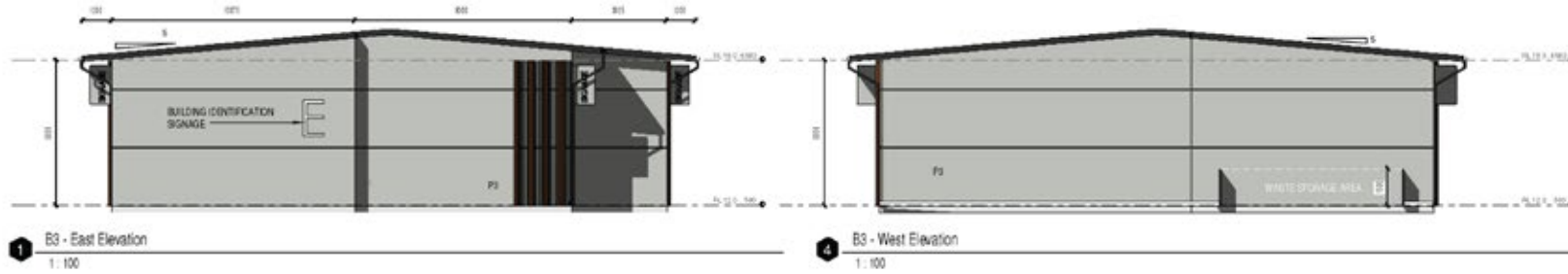
Building D	Parking	m ²	PA Door	Roller Door	Price	Est. Rental PA++	Est OG
Unit 1	1	72.5	Yes	3.2w x 4.2h	\$25,000 + GST	\$ 17,400	\$ 3,263
Unit 2	1	72.5	Yes	3.2w x 4.2h	\$25,000 + GST	\$ 17,400	\$ 3,263
Unit 3	1	72.5	Yes	3.2w x 4.2h	\$ 313,000 + GST DEVELOPER UNIT	\$ 17,400	\$ 3,263
Unit 4	1	72.5	Yes	3.2w x 4.2h	\$25,000 + GST	\$ 17,400	\$ 3,263
Unit 5	1	72.5	Yes	3.2w x 4.2h	\$25,000 + GST	\$ 17,400	\$ 3,263
Unit 6	1	72.5	Yes	3.2w x 4.2h	\$25,000 + GST	\$ 17,400	\$ 3,263
Unit 7	1	72.5	Yes	3.2w x 4.2h	\$25,000 + GST	\$ 17,400	\$ 3,263
Unit 8	1	72.5	Yes	3.2w x 4.2h	\$25,000 + GST	\$ 17,400	\$ 3,263

*all sqm sizes are approximate

Building E Floorplan



Building E Elevation

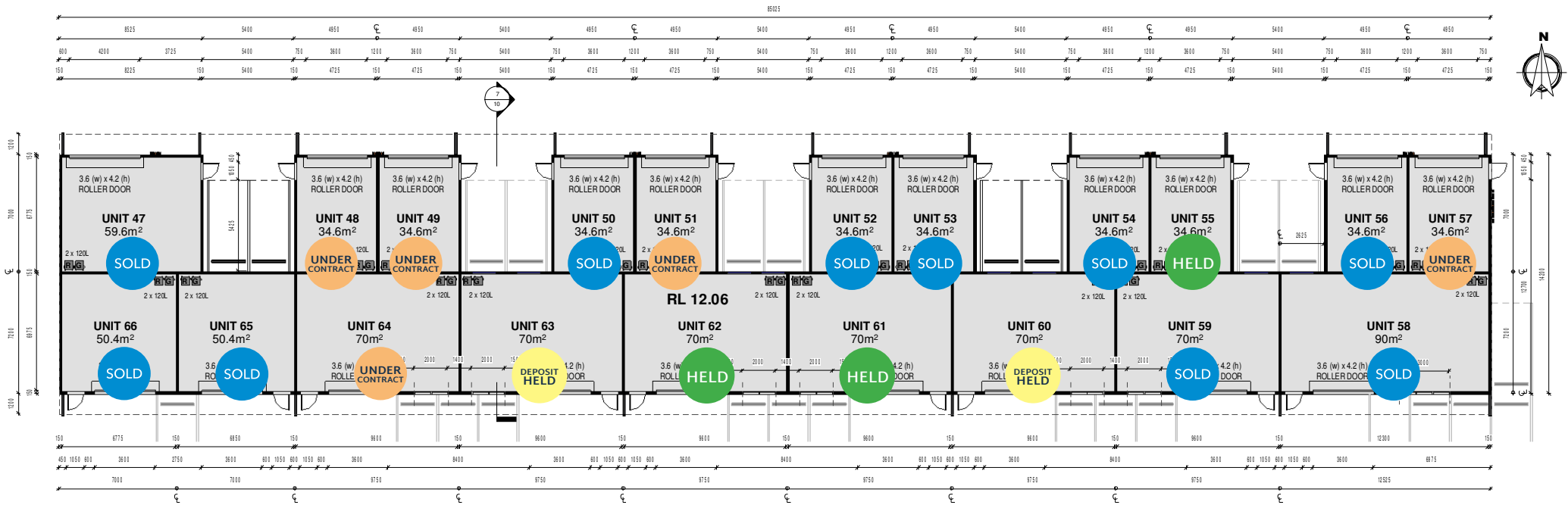


Building E Pricing

Building E	Parking	m ²	PA Door	Roller Door	Price	Est. Rental PA++	Est OG
Unit 27	1	104	Yes	4.2w X 4.2h	\$4500 + GST	\$ 25,000	\$ 4,680
Unit 28	1	104	Yes	4.2w X 4.2h	\$4500 + GST	\$ 25,000	\$ 4,680
Unit 29	1	104	Yes	4.2w X 4.2h	\$4500 + GST	\$ 25,000	\$ 4,680
Unit 30	1	104	Yes	4.2w X 4.2h	\$43500 + GST	\$ 25,000	\$ 4,680
Unit 31	1	104	Yes	4.2w X 4.2h	\$43500 + GST	\$ 25,000	\$ 4,680
Unit 32	1	104	Yes	4.2w X 4.2h	\$4500 + GST	\$ 25,000	\$ 4,680
Unit 33	1	104	Yes	4.2w X 4.2h	\$4500 + GST	\$ 25,000	\$ 4,680
Unit 34	1	104	Yes	4.2w X 4.2h	\$4500 + GST	\$ 25,000	\$ 4,680
Unit 35	1	63.5	Yes	4.2w X 4.2h	\$25000 + GST	\$ 15,200	\$ 2,858
Unit 36	1	70	Yes	4.2w X 4.2h	\$25000 + GST	\$ 16,800	\$ 3,150
Unit 37	1	70	Yes	4.2w X 4.2h	\$25000 + GST	\$ 16,800	\$ 3,150
Unit 38	1	70	Yes	4.2w X 4.2h	\$25000 + GST	\$ 16,800	\$ 3,150
Unit 39	1	70	Yes	4.2w X 4.2h	\$25000 + GST	\$ 16,800	\$ 3,150
Unit 40	1	70	Yes	4.2w X 4.2h	\$30000 + GST	\$ 16,800	\$ 3,150
Unit 41	1	70	Yes	4.2w X 4.2h	\$25000 + GST	\$ 16,800	\$ 3,150
Unit 42	1	70	Yes	4.2w X 4.2h	\$30000 + GST	\$ 16,800	\$ 3,150
Unit 43	1	70	Yes	4.2w X 4.2h	\$25000 + GST	\$ 16,800	\$ 3,150
Unit 44	1	70	Yes	4.2w X 4.2h	\$25000 + GST	\$ 16,800	\$ 3,150
Unit 45	1	100	Yes	4.2w X 4.2h	\$45000 + GST	\$ 24,000	\$ 4,500

*all sqm sizes are approximate

Building F Floorplan



Building F Elevation

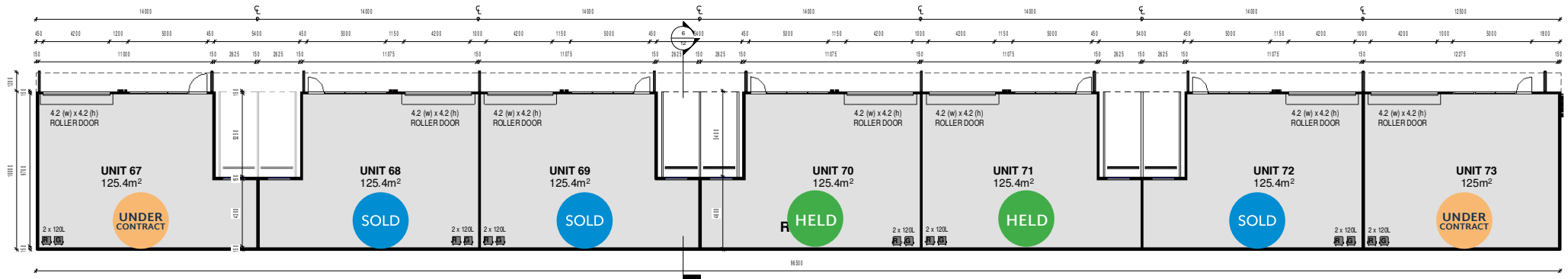


Building F Pricing

Building F	Parking	m ²	PA Door	Roller Door	Price	Rental High	Est OG
Unit 47	1	59.6	Yes	3.6w x 4.2h	\$ 245,000 + GST	\$ 14,300	\$ 2,682
Unit 48	1	34.6	Yes	3.6w x 4.2h	\$ 176,000 + GST	\$ 8,300	\$ 1,557
Unit 49	1	34.6	Yes	3.6w x 4.2h	\$ 176,000 + GST	\$ 8,300	\$ 1,557
Unit 50	1	34.6	Yes	3.6w x 4.2h	\$ 153,000 + GST	\$ 8,300	\$ 1,384
Unit 51	1	34.6	Yes	3.6w x 4.2h	\$ 176,000 + GST	\$ 8,300	\$ 1,384
Unit 52	1	34.6	Yes	3.6w x 4.2h	\$ 153,000 + GST	\$ 8,300	\$ 1,384
Unit 53	1	34.6	Yes	3.6w x 4.2h	\$ 176,000 + GST	\$ 8,300	\$ 1,384
Unit 54	1	34.6	Yes	3.6w x 4.2h	\$ 176,000 + GST	\$ 8,300	\$ 1,384
Unit 55	1	34.6	Yes	3.6w x 4.2h	\$ 176,000 + GST	\$ 8,300	\$ 1,384
Unit 56	1	34.6	Yes	3.6w x 4.2h	\$ 153,000 + GST	\$ 8,300	\$ 1,384
Unit 57	1	34.6	Yes	3.6w x 4.2h	\$ 176,000 + GST	\$ 8,300	\$ 1,384
Unit 58	2	90	Yes	3.6w x 4.2h	\$ 353,000 + GST	\$ 21,600	\$ 4,050
Unit 59	1	70	Yes	3.6w x 4.2h	\$ 286,000 + GST	\$ 16,800	\$ 3,150
Unit 60	1	70	Yes	3.6w x 4.2h	\$ 309,000 + GST	\$ 16,800	\$ 3,150
Unit 61	1	70	Yes	3.6w x 4.2h	\$ 309,000 + GST	\$ 16,800	\$ 3,150
Unit 62	1	70	Yes	3.6w x 4.2h	\$ 309,000 + GST	\$ 16,800	\$ 3,150
Unit 63	1	70	Yes	3.6w x 4.2h	\$ 309,000 + GST	\$ 16,800	\$ 3,150
Unit 64	1	70	Yes	3.6w x 4.2h	\$ 309,000 + GST	\$ 16,800	\$ 3,150
Unit 65	1	50.4	Yes	3.6w x 4.2h	\$ 257,000 + GST	\$ 10,100	\$ 2,268
Unit 66	1	50.4	Yes	3.6w x 4.2h	\$ 257,000 + GST	\$ 10,350	\$ 2,268

*all sqm sizes are approximate

Building G Floorplan



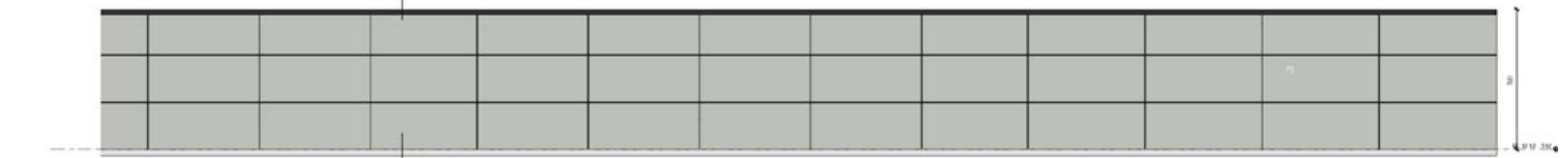
Building G Elevation



1 B5 - North Elevation - Part 1
1: 100



2 B5 - North Elevation - Part 2
1: 100



4 B5 - South Elevation - Part 1
1: 100



3 B5 - East Elevation
1: 100

5 B5 - West Elevation
1: 100

6 B5 - Section 1
1: 100



Building G Pricing

Building G	Parking	m ²	PA Door	Roller Door	Price	Rental High	Est OG
Unit 67	1	125.4	Yes	4.2w X 4.2h	\$ 564,000 + GST UNDER CONTRACT	\$ 30,100	\$ 5,643
Unit 68	1	125.4	Yes	4.2w X 4.2h	\$ 550,000 + GST SOLD	\$ 30,100	\$ 5,643
Unit 69	1	125.4	Yes	4.2w X 4.2h	\$ 550,000 + GST SOLD	\$ 30,100	\$ 5,643
Unit 70	1	125.4	Yes	4.2w X 4.2h	\$ 550,000 + GST HELD	\$ 30,100	\$ 5,643
Unit 71	1	125.4	Yes	4.2w X 4.2h	\$ 550,000 + GST HELD	\$ 30,100	\$ 5,643
Unit 72	1	125.4	Yes	4.2w X 4.2h	\$ 550,000 + GST SOLD	\$ 30,100	\$ 5,643
Unit 73	1	125	Yes	4.2w X 4.2h	\$ 560,000 + GST UNDER CONTRACT	\$ 30,100	\$ 5,625

*all sqm sizes are approximate

DiJONES

COMMERCIAL



fortiswestgosford.com
dijonescommercial.com